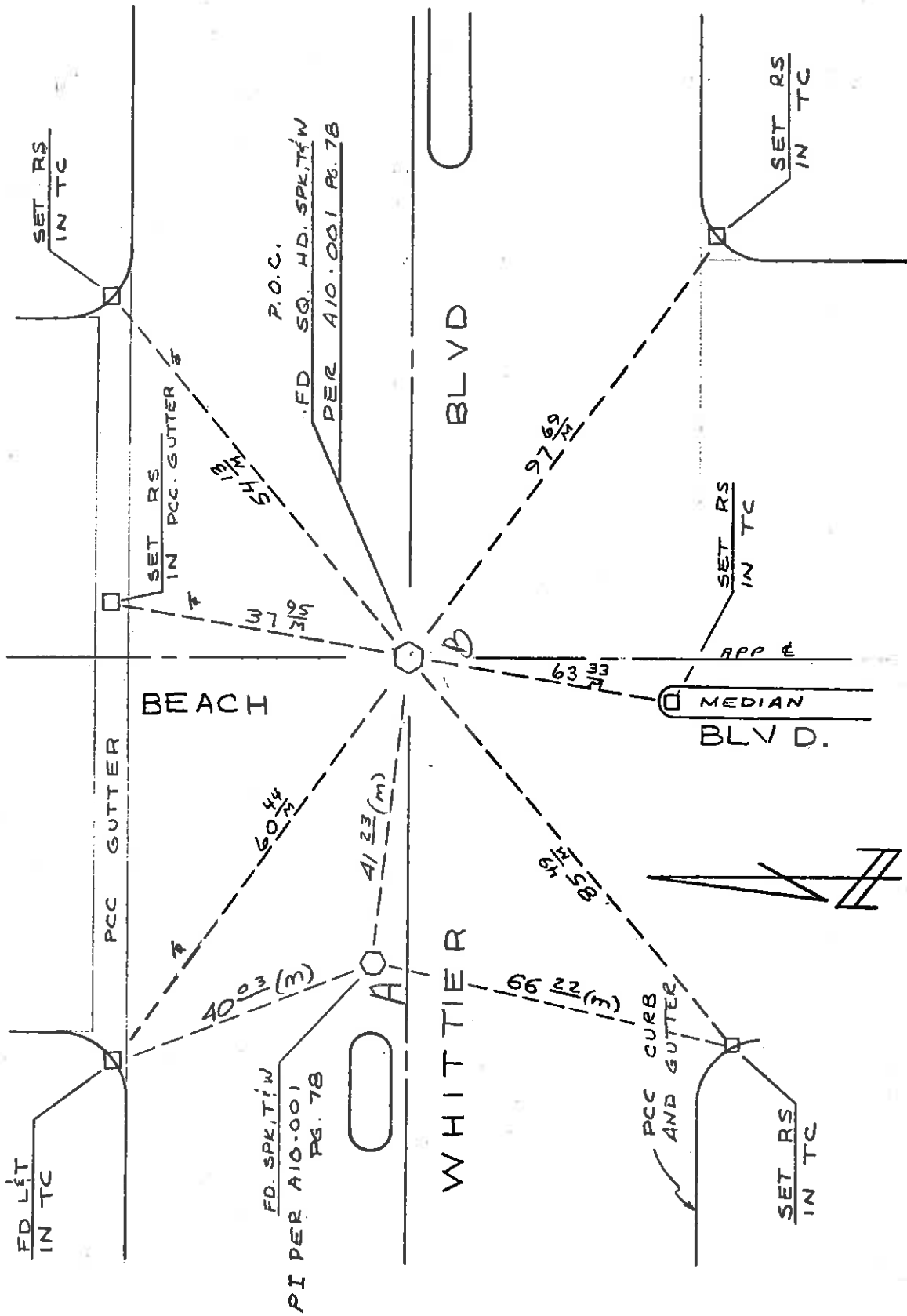


ORA 72 92/11.9  
07212-260231  
SUR. REQ# 70-217

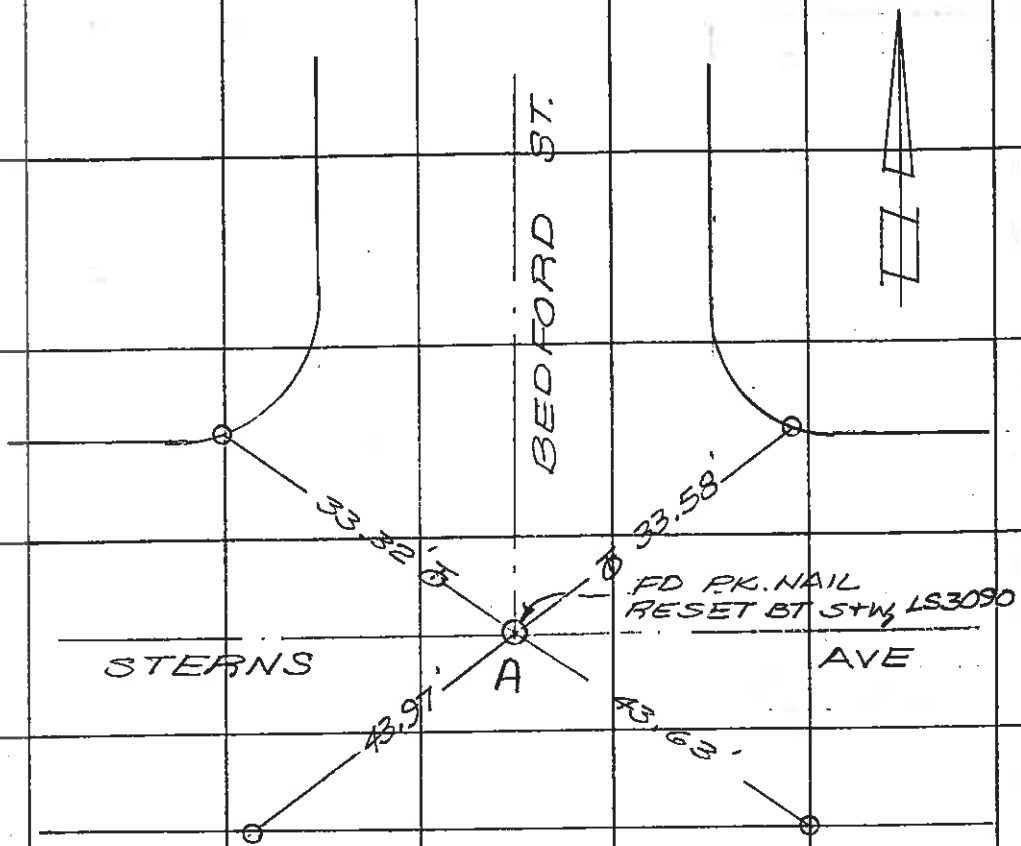
TIES AT  
WHITTIER BLVD. AND  
BEACH BLVD.

6-23-70  
R.I. ADAMS & PTY  
G.A. MANSON



SURVEY OF STERNS AV. @ BEDFORD ST. F. B. Pg. \_\_\_\_\_  
SURVEY BY ROBERT WADA + ASSOC TR. No. \_\_\_\_\_  
DATE 7-22-88 JN 1722

SO. CALIF. BLUE PRINT CO. -



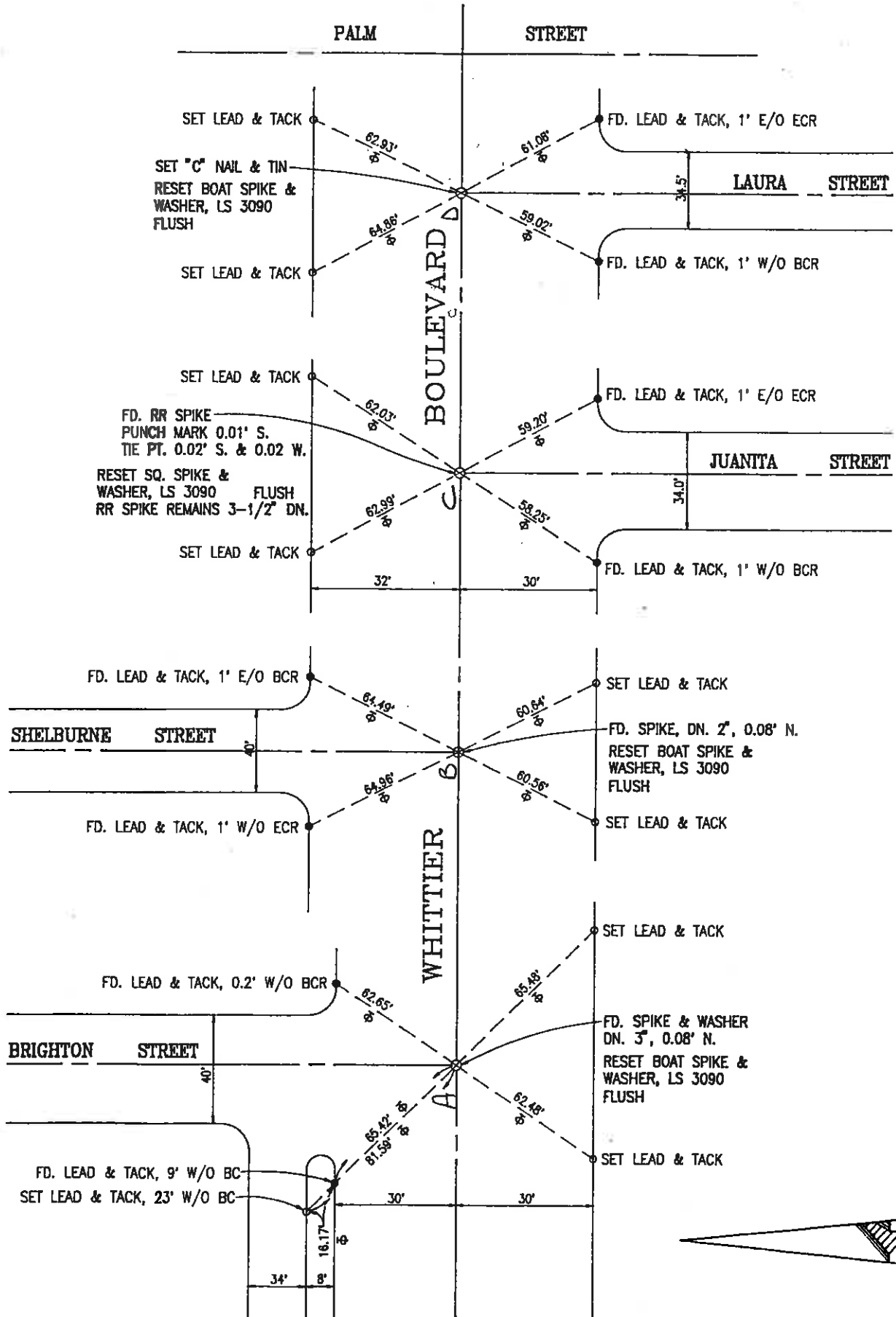
O = SET LYT ON T.C.

**ROBERT WADA & ASSOCIATES**

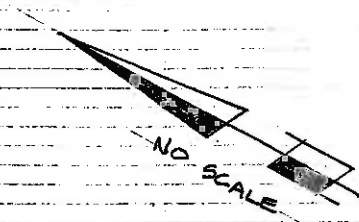
410 W. AMERIGE AVENUE, FULLERTON, CA 92632  
(714) 992-5461

CREW T. SUZUKI  
F. LERMA

JOB NO. 1962  
DATE 4-2-93  
PAGE 1 OF 2



5

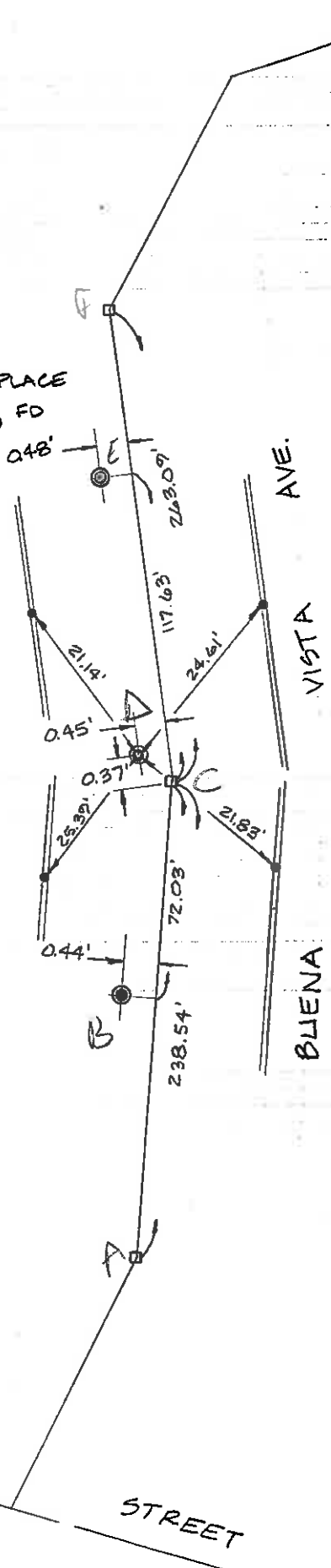


FIELD SURVEY FOR  
REPLACEMENT OF  
MONUMENTS & PK NAILS AS  
FOUND ON ORIGINAL RW&A INC.  
SURVEY DATED 8-16-90.

MONUMENT NOTES

- SET PK NAIL
- ⊙ SET SQ. SPK & TIN TO REPLACE  
BT. SPK & W, RCE 20927, FD  
ON 8-24-90.
- LEAD & TACK ON CURB

ALL MONUMENTS SET  
WERE REPLACEMENTS OF  
PRIOR EXISTING MONUMENTS.



RE-SET & POINTS FD. ON 8/16/90 SURVEY.

